

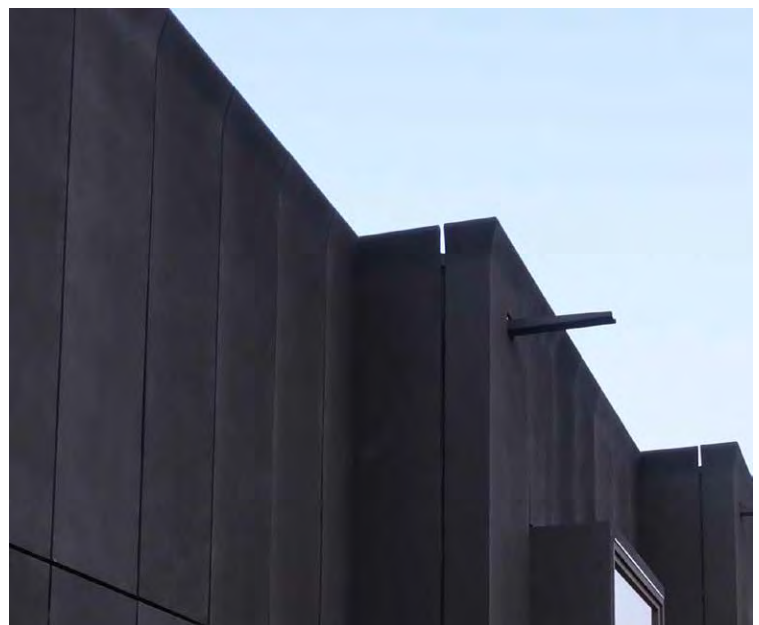
Backyard Initiative



BACKYARD INITIATIVE

The compact housing unit took on interesting character with our Tactile Fiber Reinforced (FRP) Cladding. The architect created panel termination details that bulged as the ends much the same as the Serif font. We designed and engineered the facade cladding and window cowlings with embeds for easy attachment.

- ARCHITECT:** WOJR
CLIENT: Airbnb
LOCATION: Petaluma, California, USA
MATERIALS: Tactile Fiber Reinforced Polymer™
Custom Stipple Finish
PRODUCTS: Tactile Cladding™



Contact a product manager for more information.

tactile

FIBER REINFORCED POLYMER CLADDING™

Tactile Exterior Cladding™ - Fiber Reinforced Polymer - Project References

Backyard Initiative



Contact a product manager for more information.

Private Residence Monterrey



PRIVATE RESIDENCE MONTERREY

A stunning private residence with cantilevered roof lines, which are accented with our Tactile Cast Fiber Reinforced Polymer (FRP) Cladding™ using our cast-in Bronze Melded Metal™ finish. The custom panels feature a robust sand texture, subtle reveal details, and a sculptural subordinate surface which provides depth and visual interest.

ARCHITECT: Drewett Works

LOCATION: Monterrey, Mexico

MATERIALS: Tactile Fiber Reinforced Polymer™
Tactile Melded Metal Bronze™

PRODUCTS: Tactile Cladding™



Contact a product manager for more information.