

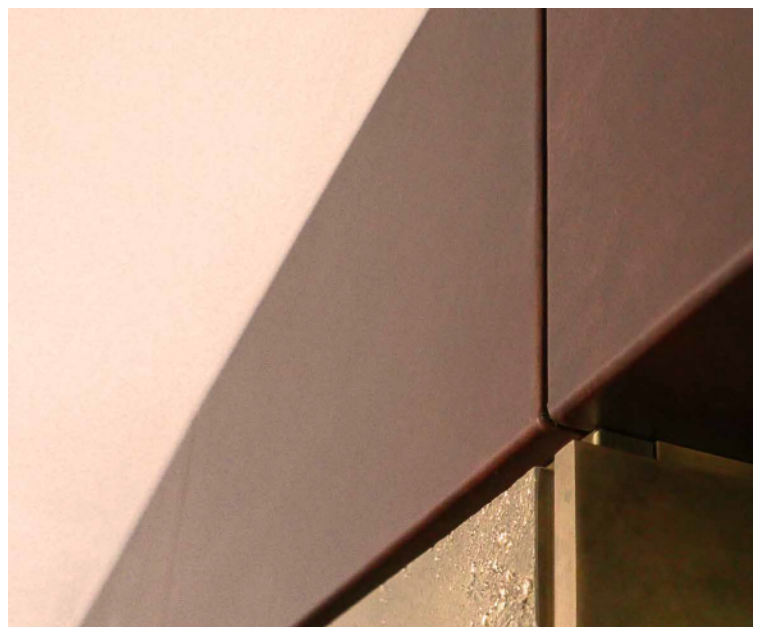
Beach House



BEACH HOUSE

The project evolved from the architect’s massing model and inspiration images. Working with the client and the architect, our engineering and manufacturing team developed refined fabrication methods to support the project. Each sightline and joint is deliberate with the Tactile Leather Cladding™, which serves a complimentary role to the Tactile Smooth Platen Cast Bronze™.

- ARCHITECT:** Giannone Petricone Associates
- LOCATION:** San Diego, California, USA
- MATERIALS:** Tactile Leather Cladding™
- PRODUCTS:** Tactile Cladding™



Contact a product manager for more information.