

## Carlsbad Airport Plaza



## CARLSBAD AIRPORT PLAZA

Clean crisp lines and integrated extruded aluminum contrasting reveals with metallic silver panels compliment the architectural massing of this office building. Our innovative four-sided silicone application in combination with tension leveled 4.76 mm (3/16") aluminum resulted in super flat panels and formed sharp corners. We applied the high performance finish post-fabrication to insure consistent tonality among panels.

**LOCATION:** Carlsbad, California USA

**MATERIALS:** Tactile Formed Aluminum™

**PRODUCTS:** Tactile Exterior Cladding™



Contact a product manager for more information.



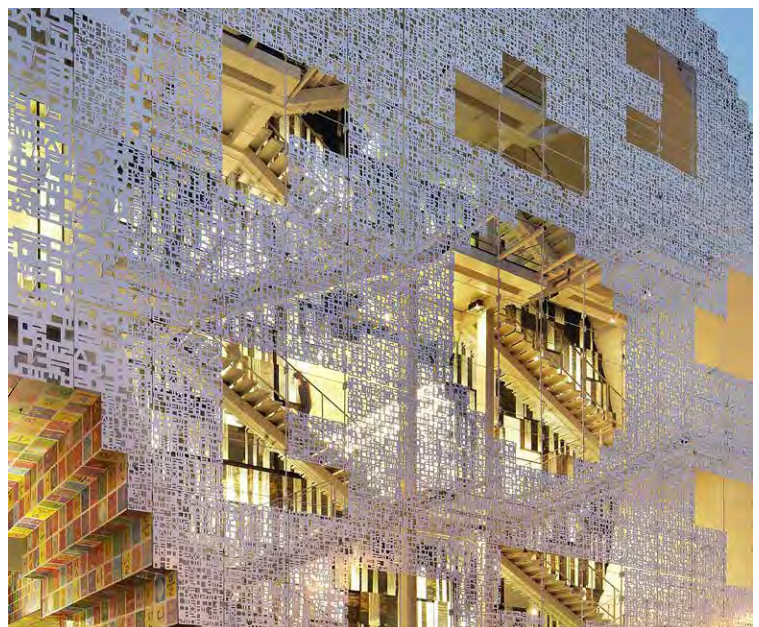
## Korean Pavilion



## KOREAN PAVILION

The six-story structure was created to house the “Korean Experience” within the 2010 World Exposition. The exterior features the Korean alphabet in various sizes and transparencies in a collage offset with digitally printed metal panels. A unique tension facade support system comprised of a thin net of vertical and horizontal rods reduce visual massing.

- ARCHITECT:** Mass Studies (Minsuk Cho)  
**CLIENT:** Shanghai World Expo 2010  
**LOCATION:** Shanghai, China  
**MATERIALS:** Tactile Formed Aluminum™  
**PRODUCTS:** Tactile Exterior Cladding™



Contact a product manager for more information.



Korean Pavilion



Contact a product manager for more information.



Korean Pavilion



Contact a product manager for more information.



## Uniqlo Flagship Store



## UNIQLO FLAGSHIP STORE

The UNIQLO Flagship Store is centrally located on the most popular shopping street in Shanghai. The design team chose to enhance the façade by creating a fabric appearance across the more than 30,000 square feet of façade. The perforated plate aluminum features the application of our Tactile Ceramic Composite coating to mitigate soiling.

- ARCHITECT:** Bohlin Cywinski Jackson  
**CLIENT:** Fast Retailing  
**LOCATION:** Shanghai, China  
**MATERIALS:** Tactile Formed Aluminum™  
**PRODUCTS:** Tactile Exterior Cladding™



Contact a product manager for more information.



Uniqlo Flagship Store



Contact a product manager for more information.



## Wellington Mews



## WELLINGTON MEWS

The building features curved architectural surfaces that act as sunshades and soften the urban context of the building. We developed a method of forming the 3 mm aluminum plate cladding to integrate open rainscreen joinery and comply with the intended design aesthetic. This reduced the weight of the flying buttress features.

- ARCHITECT:** John Portman & Associates  
**CLIENT:** Taj Hotels & Resorts  
**LOCATION:** Mumbai, India  
**MATERIALS:** Tactile Formed Aluminum™  
**PRODUCTS:** Tactile Exterior Cladding™



Contact a product manager for more information.